

2017 Lidar

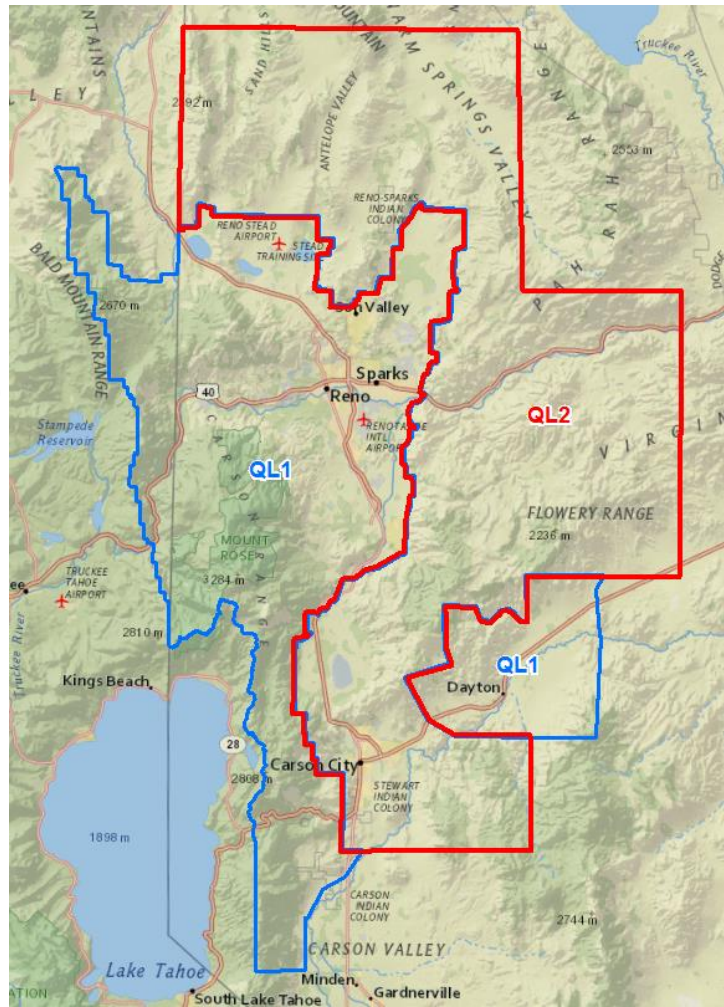
QL1 = 696 square miles
QL2 = 873 square miles
Total area = 1,359 square miles

Total data package is just under 1 TB.

- LAS tiles
- Breaklines (hydro enforcement only)
- DEM tiles
- DEM MOSAIC (QL1 only)
- DSM MOSAIC (QL1 only)
- INTENSITY MOSAIC (QL1 only)

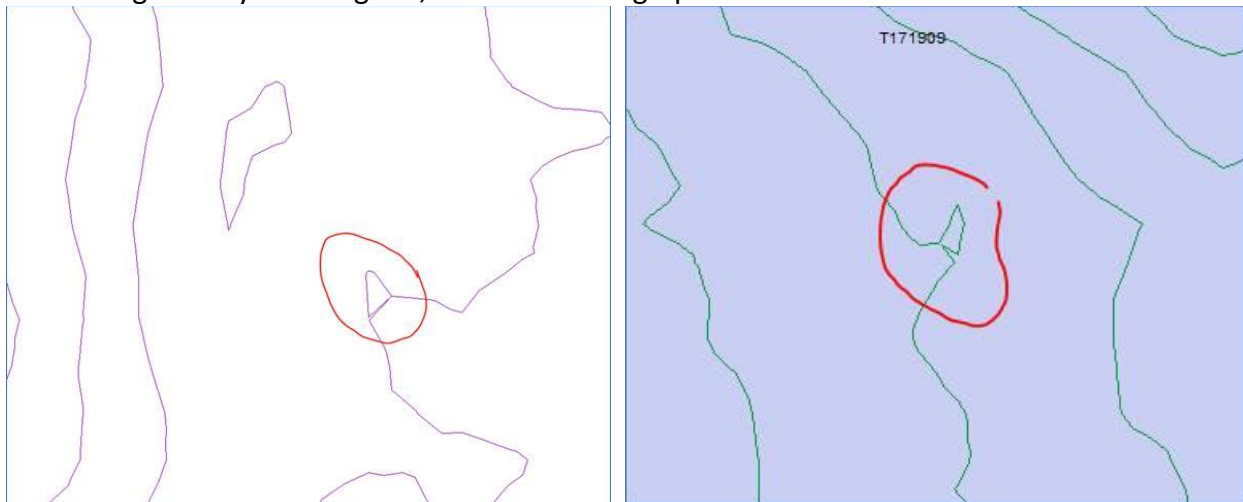
Data has been copied from USB drive to Washoe County file system.

LAS and DEM tiles do not correspond to PLSS sections, so data requests are a little more involved.



Processing time to create one section of 1-ft contours from QL1 DEM Mosaic: Under 1 minute

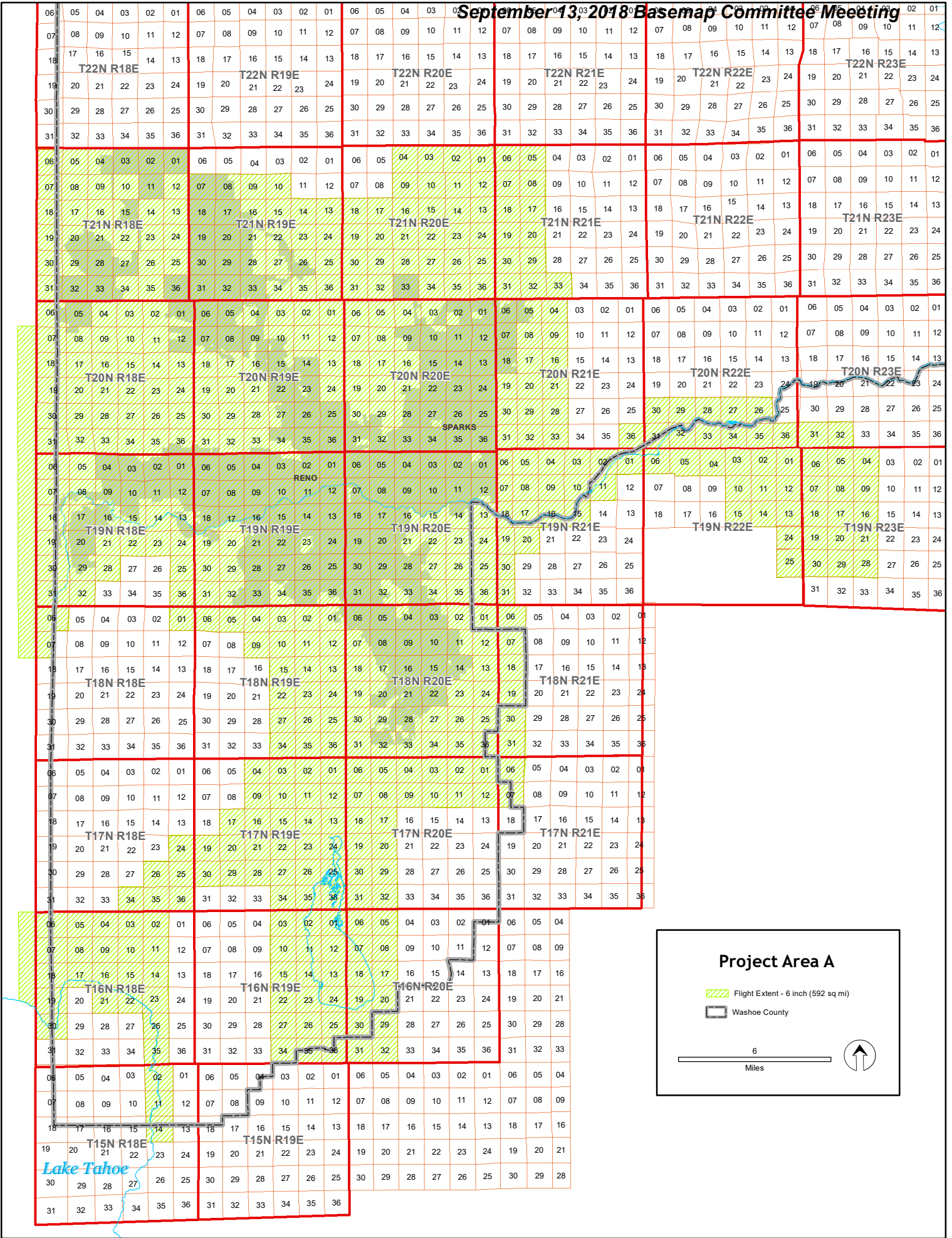
Contours generally looked good, but a few cartographic issues were found:



Issues for discussion:

- Do we create derivative products, especially contours?
- If so, do we sell derived contours and at what cost?
- How would this affect Basemap funding?
- Source data is “free”, but it does take resources to store the data, interact with customers, and package/distribute the data.

September 13, 2018 Basemap Committee Meeting



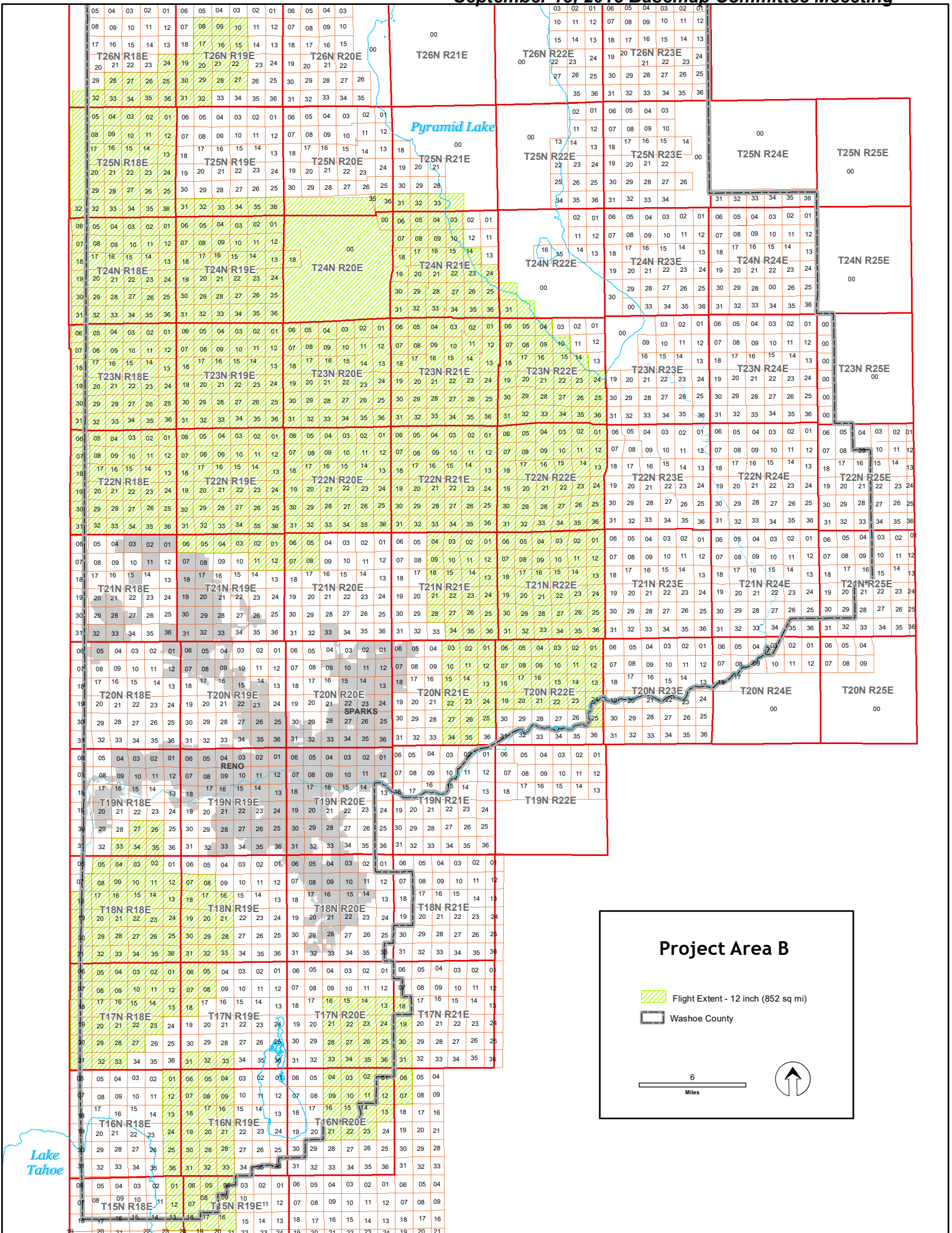
Project Area A

- Flight Extent - 6 inch (592 sq mi)
- Washoe County



6

Miles

September 13, 2018 Basemap Committee Meeting

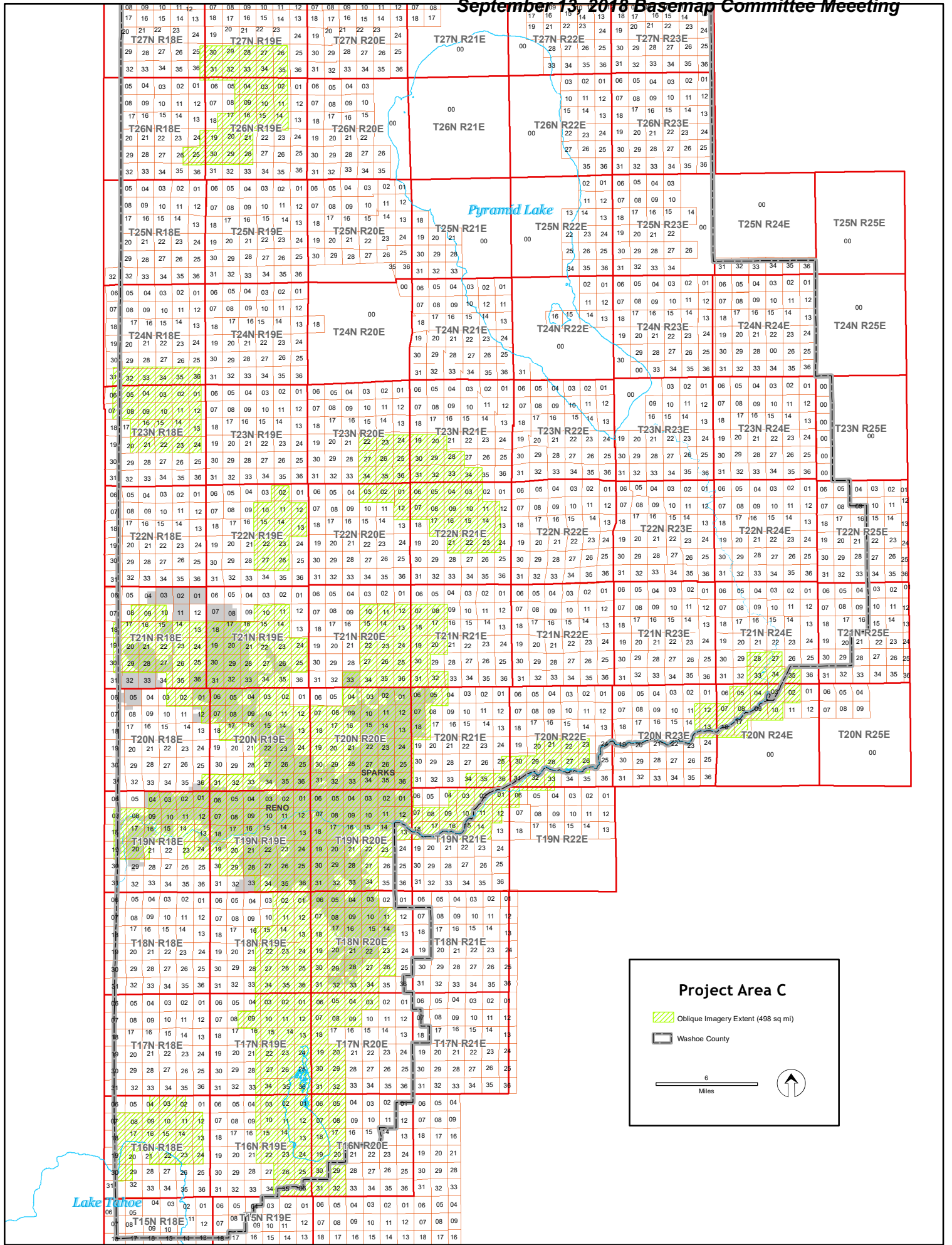


Project Area B

-  Flight Extent - 12 inch (852 sq mi)
-  Washoe County

6
Miles

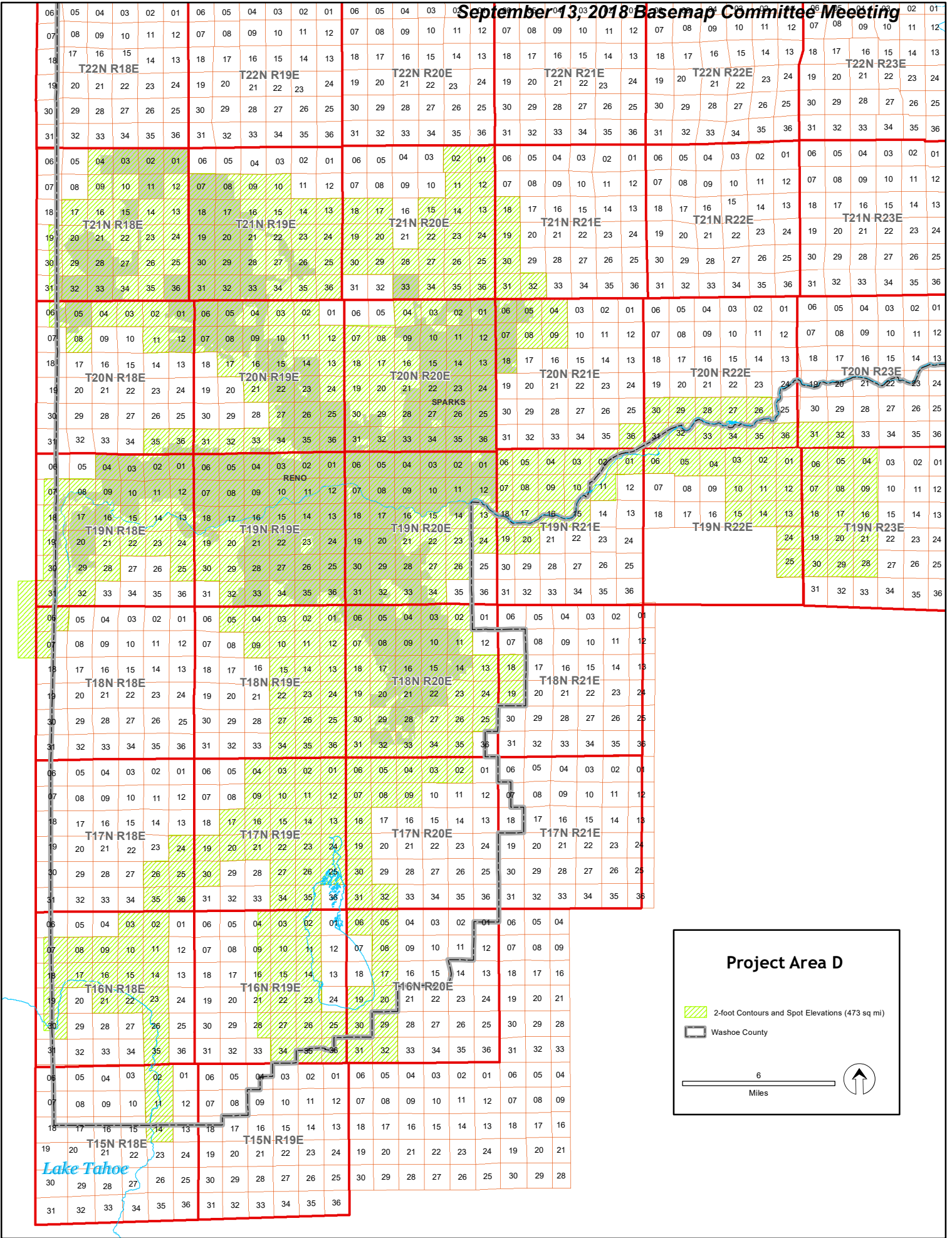




Project Area C

- Oblique Imagery Extent (498 sq mi)
- Washoe County

6 Miles



Project Area D

- 2-foot Contours and Spot Elevations (473 sq mi)
- Washoe County

6 Miles